



For Sale - A unique 6 bedroomed estate with breathtaking sea views.
Set in 2.5 acres of totally private and secure grounds in Koh Samui, Thailand



ACCOMMODATION

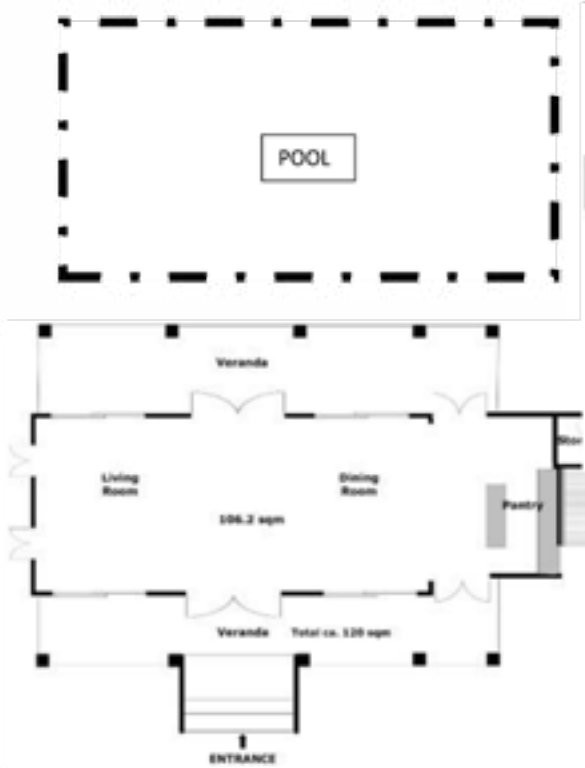
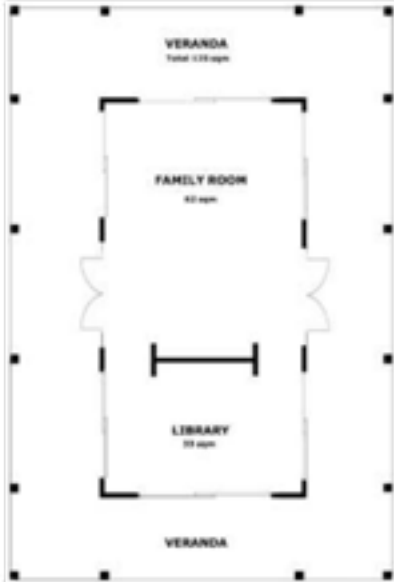
A truly stunning and opulent property. There are 5 buildings across the property, including 6 air conditioned guest bedroom suites, all with dressing rooms, desk space, mini bar and safes , sea views and private terraces. Master suite is 181sqm. 2 bedrooms have their own spa treatment wet room.

Bar with pantry kitchen area, dining and living room family and media room with library / five separate staff quarters with 5 bedrooms and 2 bathrooms / commercial kitchen/ spa and fitness with steam , sauna, gym, jacuzzi ,yoga sala / storage rooms/ parking area/ 300sqm Infinity edge swimming pool ,with a sunken pool bar and 3 jacuzzi sunbeds / lots of outside decking areas for sunbathing and relaxing.



Ground floor

Buildings not to scale and are further apart



* Position of Bedroom 6*



First Floor



Lower Floor



Ground Floor (staff)



DESCRIPTION

An exceptional estate, with breathtaking sea views. It is 210 meters above sea level, easily accessible through manned security gates and a wide private concrete road . From its totally secluded and mountain top position, the majestic backdrop of the mountains on the Mainland of Thailand can be clearly seen. Close to sandy beaches and local islands of Southern Koh Samui. The estate is not overlooked ,and is nestled into a ridge of hills ,looking over lush vegetation and coconut plantations.

The estate provides a magnificent, opulent private residence with an option to significant rental potential at the high end of the market. The fully equipped Spa is an attractive bonus to potential renters. We were awarded 'The best exclusive use property 2015' from Conde Nast.

It could also be developed into an exclusive boutique hotel and health spa retreat (can build 40-50 more rooms on the existing land.) Freehold land title. Hotel licence. The current construction occupies 50% of the land plot. The build size is approximately



2,100 square meters(21,000 square feet).The estate is serviced by completed infrastructure. Security, concrete access roads, electricity, water and fibre optics are supplied underground. It is an area of outstanding natural beauty.

Koh Samui is a tropical island situated off the East coast of Thailand and is the largest of an archipelago of more than 80 islands with coconut palms and white sandy beaches. It has built up a reputation as a small tropical paradise and a premier holiday , spa and medical destination. Climate is tropical, all year, with temperatures from 25 to 36 degrees depending upon the time of the year.

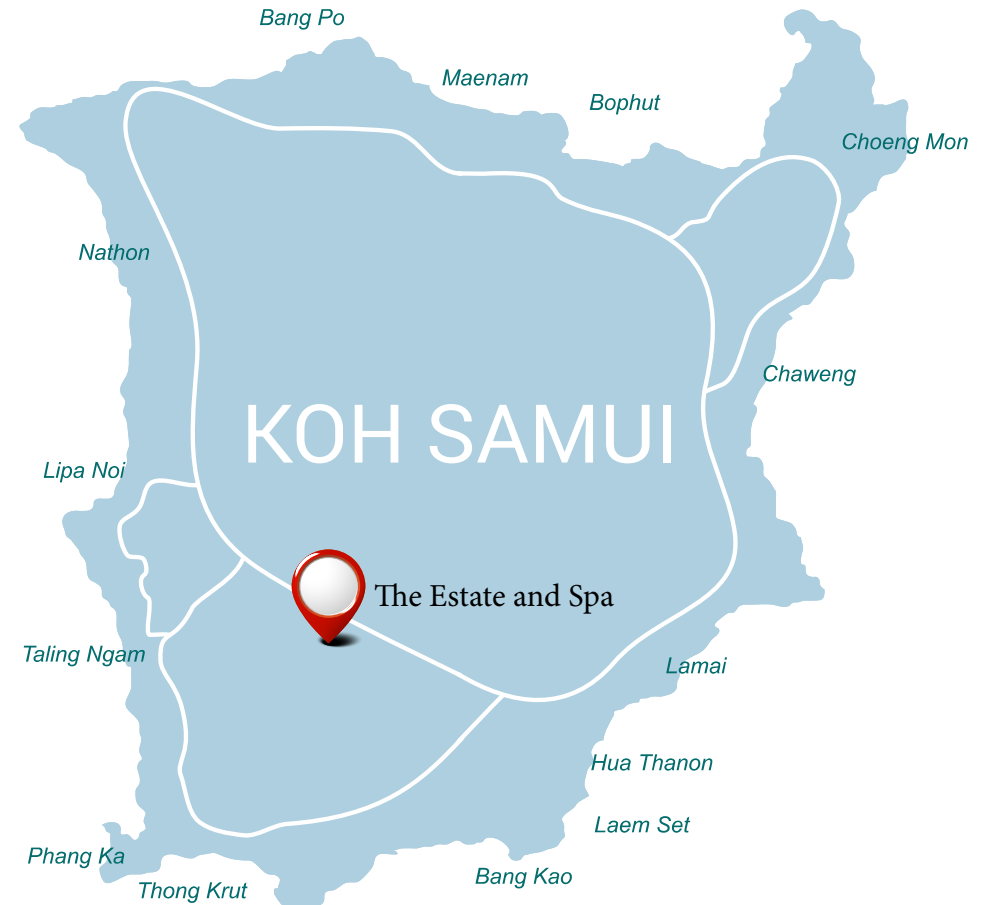


VIEWS FROM THE ESTATE/LOCAL BEACHES



LOCATION

GPS: Latitude 9.434600 Longitude 99.958400



LIFESTYLE



ON OFFER

For Sale – the finished luxury property and land, on 6 rai plot (9,600sqm) Existing Build area 2100sqm. Undeveloped land area 4800sqm (1.25 acres).

Price offers in the region of \$US 5,000,000.

Contact

PLEASE CONTACT YOUR AGENT

